

# Career Service Provider Training

December 16-17, 2020



# Agenda

## December 16, 2020

[Click to join Zoom meeting @ 12:30 p.m.](#)

Welcome & Introductions  
Overview of Northern Middle Workforce Area

Marla Rye	12:30 p.m.
Marla Rye	12:45 p.m.
Andrea Dillard	

[Click to join State Teams meeting @ 2:00 p.m.](#)

State Policies & Procedures  
WIOA Performance  
Key Performance Indicators

Justin Attkisson	2:00 p.m.
Ryan Allen	3:00 p.m.
Ben Passino	3:30 p.m.

[Click to join State Teams Meeting @ 4:00 p.m.](#)

State WIOA Youth Overview/Director  
Wrap-up

Carla Garrett	4:00 p.m.
Marla Rye	4:30 p.m.

## December 17, 2020

[Click to join CSP Zoom Training Day 2 @ 8:15 a.m.](#)

Welcome  
Fiscal Operations  
Monitoring Process  
Break  
WIOA Local Performance  
NM WIOA Policy

Marla Rye	8:15 a.m.
Ginger Fussell	8:30 a.m.
Meagan Dobbins	9:45 a.m.
	10:15 a.m.
Renee Hollis	10:30 a.m.
Renee Hollis	11:15 a.m.
Meagan Dobbins	

Lunch Break	12:15 p.m.
-------------	------------

[Click to Resume @ 1:00 p.m.](#)

OSO Report/Infrastructure  
Board Business Services  
Questions & Wrap up

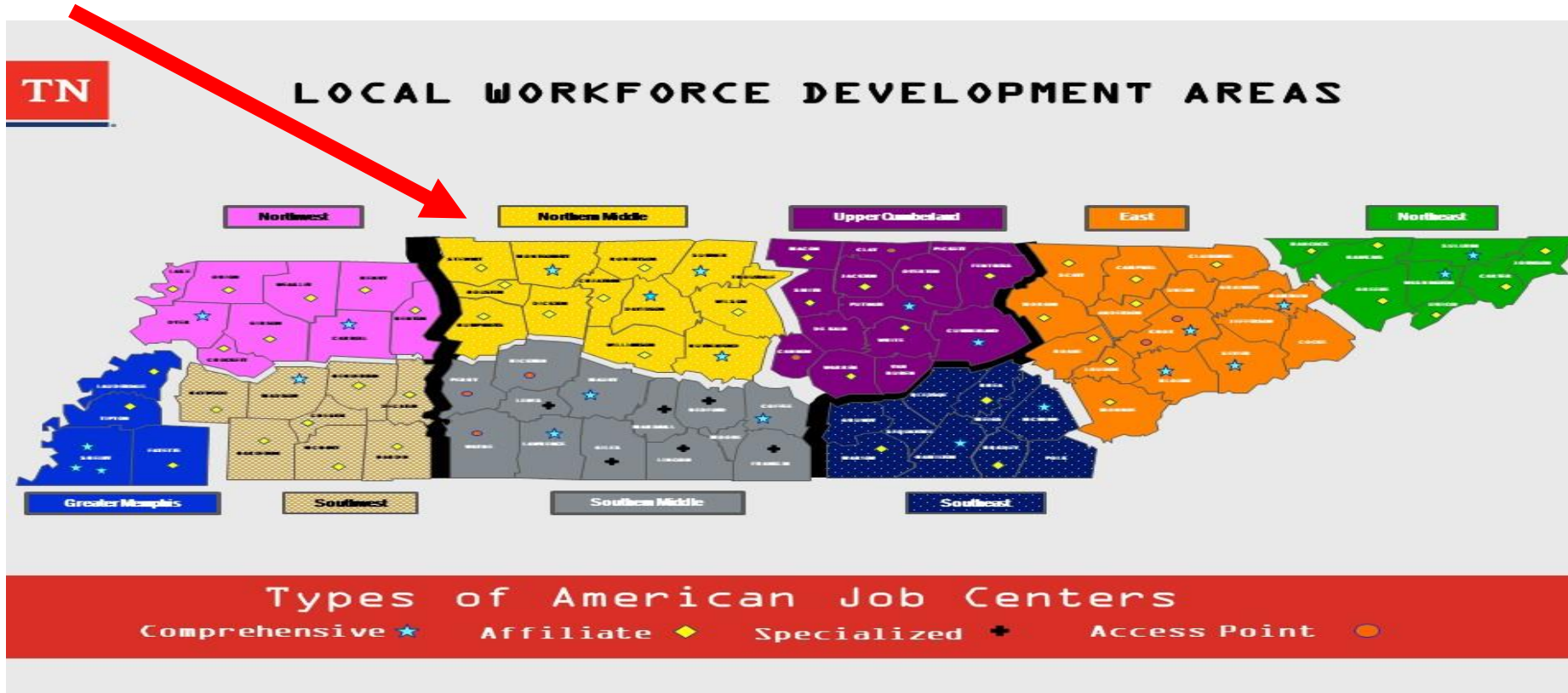
George Phillips	1:00 p.m.
Freda Herndon	1:30 p.m.
Marla Rye	2:30 p.m.

# Introductions

1. Name
2. Organization
3. Role
4. One tangible item that you want for Christmas



# Northern Middle Workforce Board





# Economy Overview



**2,061,020**

**Population (2020)**

Population grew by 168,048 over the last 5 years and is projected to grow by 123,001 over the next 5 years.

**1,139,053**

**Total Regional Employment**

Jobs grew by 150,419 over the last 5 years and are projected to grow by 94,281 over the next 5 years.

**\$65.9K**

**Avg. Earnings Per Job (2020)**

Regional average earnings per job are \$3.7K below the national average earnings of \$69.6K per job. [?](#)

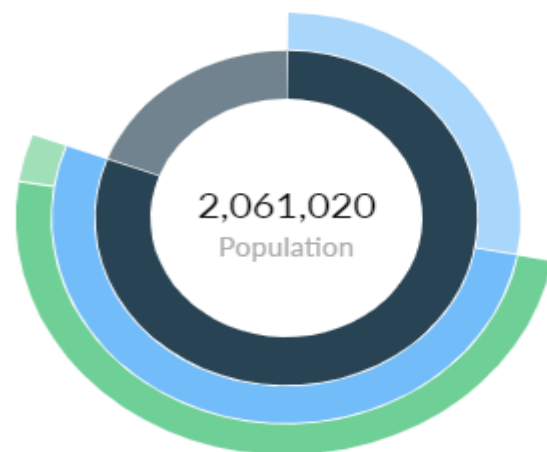
## Takeaways



- As of 2020 the region's population increased by 8.9% since 2015, growing by 168,048. Population is expected to increase by 6.0% between 2020 and 2025, adding 123,001.
- From 2015 to 2020, jobs increased by 15.2% in Northern Middle LWDA from 988,634 to 1,139,053. This change outpaced the national growth rate of 6.2% by 9.0%. As the number of jobs increased, the labor force participation rate increased from 63.3% to 65.6% between 2015 and 2020.
- Concerning educational attainment, 22.5% of the selected regions' residents possess a Bachelor's Degree (3.4% above the national average), and 7.2% hold an Associate's Degree (1.0% below the national average).

	Population (2020) ?	Labor Force (2020)	Jobs (2020) ?	Cost of Living	? GRP	? Imports	? Exports
Northern Middle LWDA	2,061,020	1,090,215	1,139,053	95.2	\$143.4B	\$107.7B	\$138.8B
State	6,884,132	3,332,955	3,426,790	92.2	\$380.5B	\$329.2B	\$400.7B
Nation	330,354,682	161,053,178	166,243,585	100.0	\$21.1T	\$0	\$9.0T

2020 Labor Force Breakdown

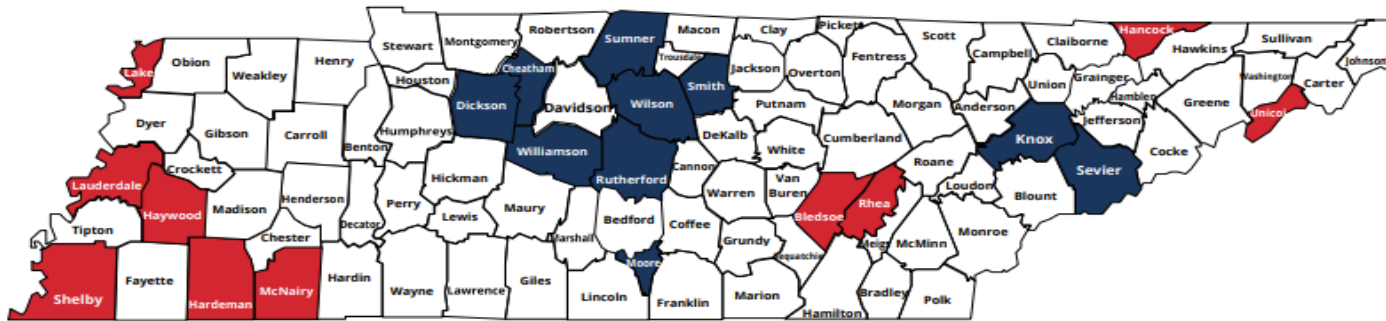


	Population
● Total Working Age Population	1,662,864
● Not in Labor Force (15+) ?	572,649
● Labor Force ?	1,090,215
● Employed ?	1,022,208
● Unemployed ?	68,007
● Under 15	398,156

County	Population	%	Labor Force	Employed	Unemployed	Rate
Cheatham	40,907	2.0%	21,721	20,549	1,172	5.4%
Davidson	699,350	33.9%	406,895	378,733	28,162	6.9%
Dickson	54,574	2.6%	26,710	25,210	1,500	5.6%
Houston	8,220	0.4%	3,301	3,024	277	8.4%
Humphreys	18,661	0.9%	8,817	8,252	565	6.4%
Montgomery	212,975	10.3%	86,940	80,267	6,673	7.7%
Robertson	72,578	3.5%	37,745	35,507	2,238	5.9%
Rutherford	340,536	16.5%	182,808	172,264	10,544	5.8%
Stewart	13,805	0.7%	5,516	5,140	376	6.8%
Sumner	194,765	9.4%	101,820	95,853	5,967	5.9%
Trousdale	11,891	0.6%	5,389	5,061	328	6.1%
Williamson	244,543	11.9%	126,502	120,654	5,848	4.6%
Wilson	148,214	7.2%	76,051	71,694	4,357	5.7%
Total	2,061,019	100.0%	1,090,215	1,022,208	68,007	6.2%

# October Unemployment Rates

## State of Tennessee



### Lowest County Unemployment Rates

Rank	County	Oct 2020 Pre. Rate (%)
1	Williamson	4.6
2	Moore	4.8
3	Cheatham	5.4
4	Smith	5.5
5	Dickson	5.6
6	Sevier	5.6
7	Knox	5.7
8	Wilson	5.7
9	Rutherford	5.8
10	Sumner	5.9

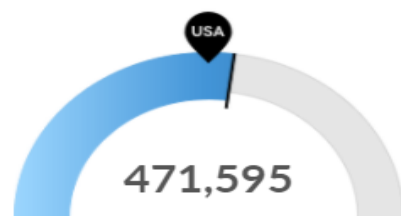
### Highest County Unemployment Rates

Rank	County	Oct 2020 Pre. Rate (%)
95	Shelby	11.0
94	Lake	10.4
93	Lauderdale	10.1
92	Hancock	9.7
91	Haywood	9.5
90	McNairy	9.4
89	Hardeman	9.4
88	Unicoi	9.0
87	Bledsoe	9.0
86	Rhea	8.6



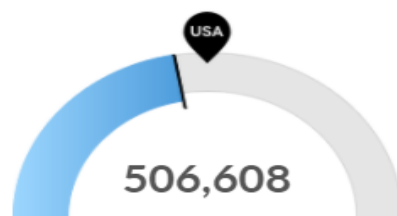
# Characteristics

## Population Characteristics



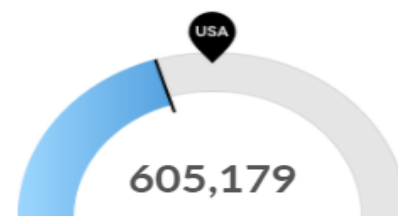
Millennials

Your area has 471,595 millennials (ages 25-39). The national average for an area this size is 418,136.



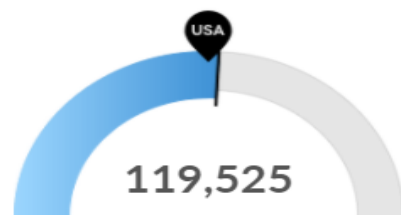
Retiring Soon

Retirement risk is low in your area. The national average for an area this size is 596,251 people 55 or older, while there are 506,608 here.



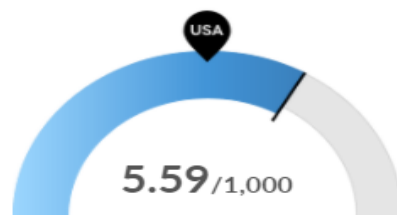
Racial Diversity

Racial diversity is low in your area. The national average for an area this size is 808,927 racially diverse people, while there are 605,179 here.



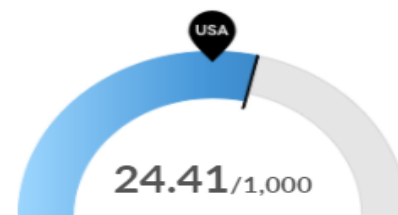
Veterans

Your area has 119,525 veterans. The national average for an area this size is 113,795.



Violent Crime

Your area has 5.59 violent crimes per 1,000 people. The national rate is 3.53 per 1,000 people.

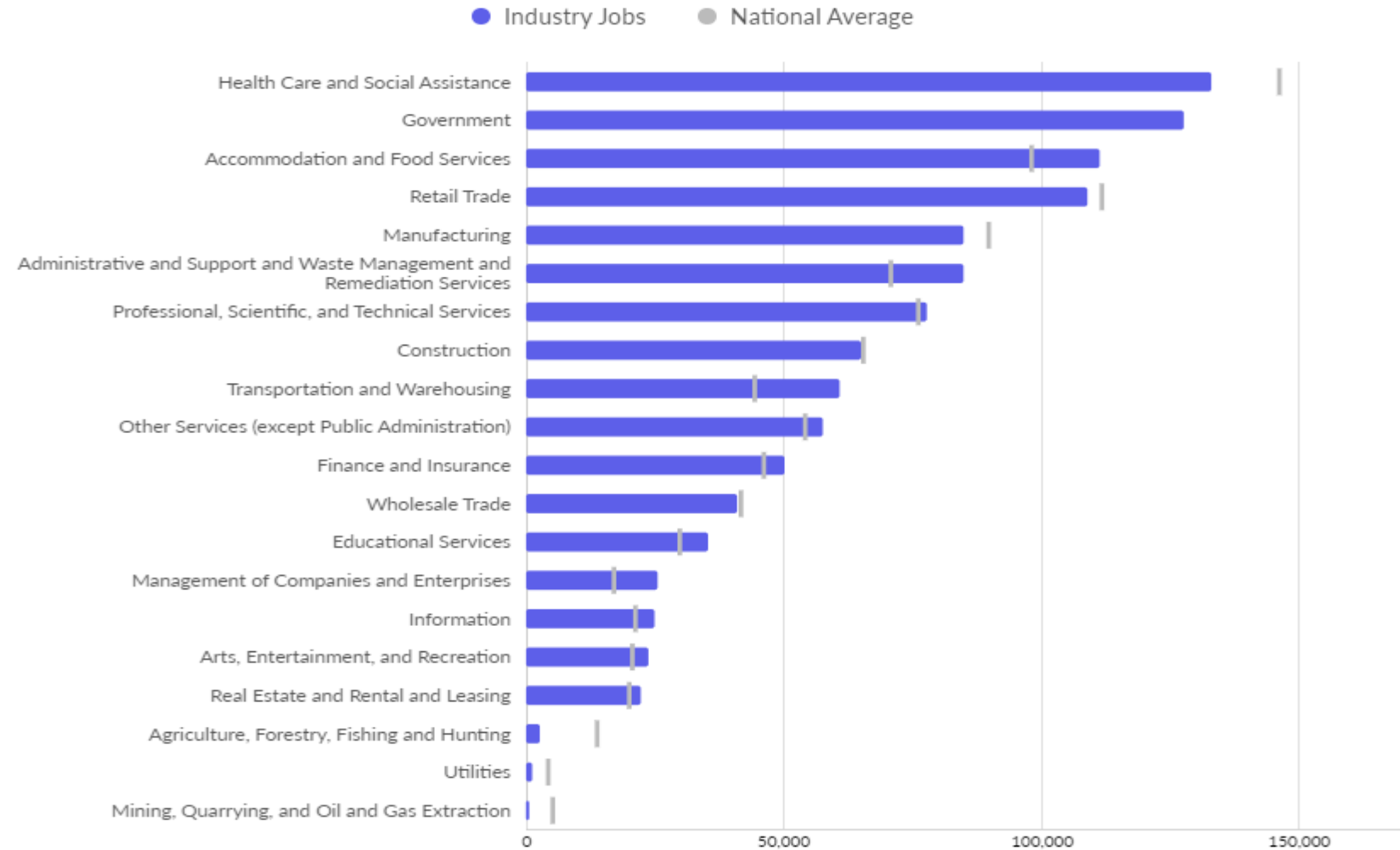


Property Crime

Your area has 24.41 property crimes per 1,000 people. The national rate is 19.79 per 1,000 people.

# Employment Base

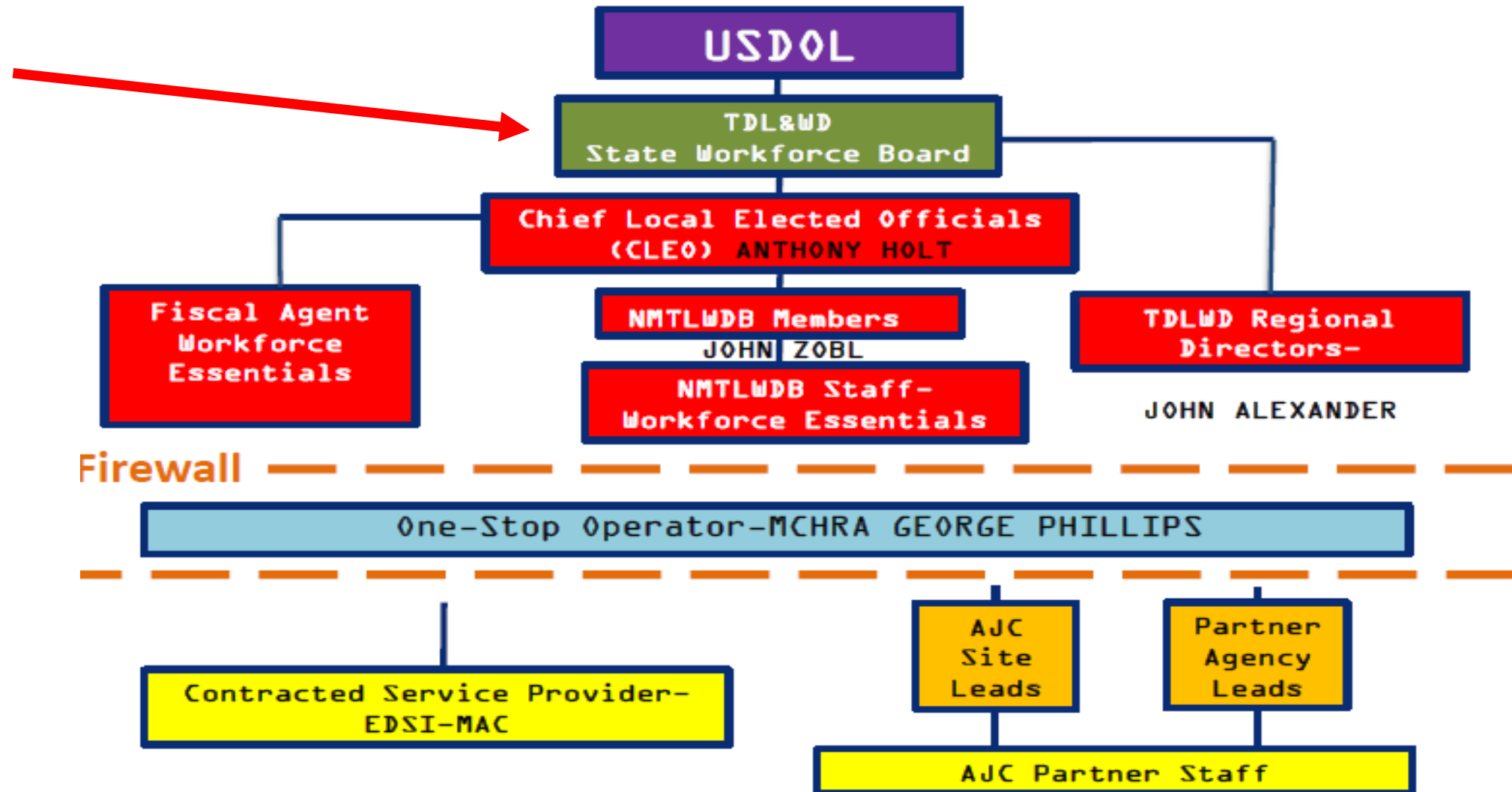
## Largest Industries



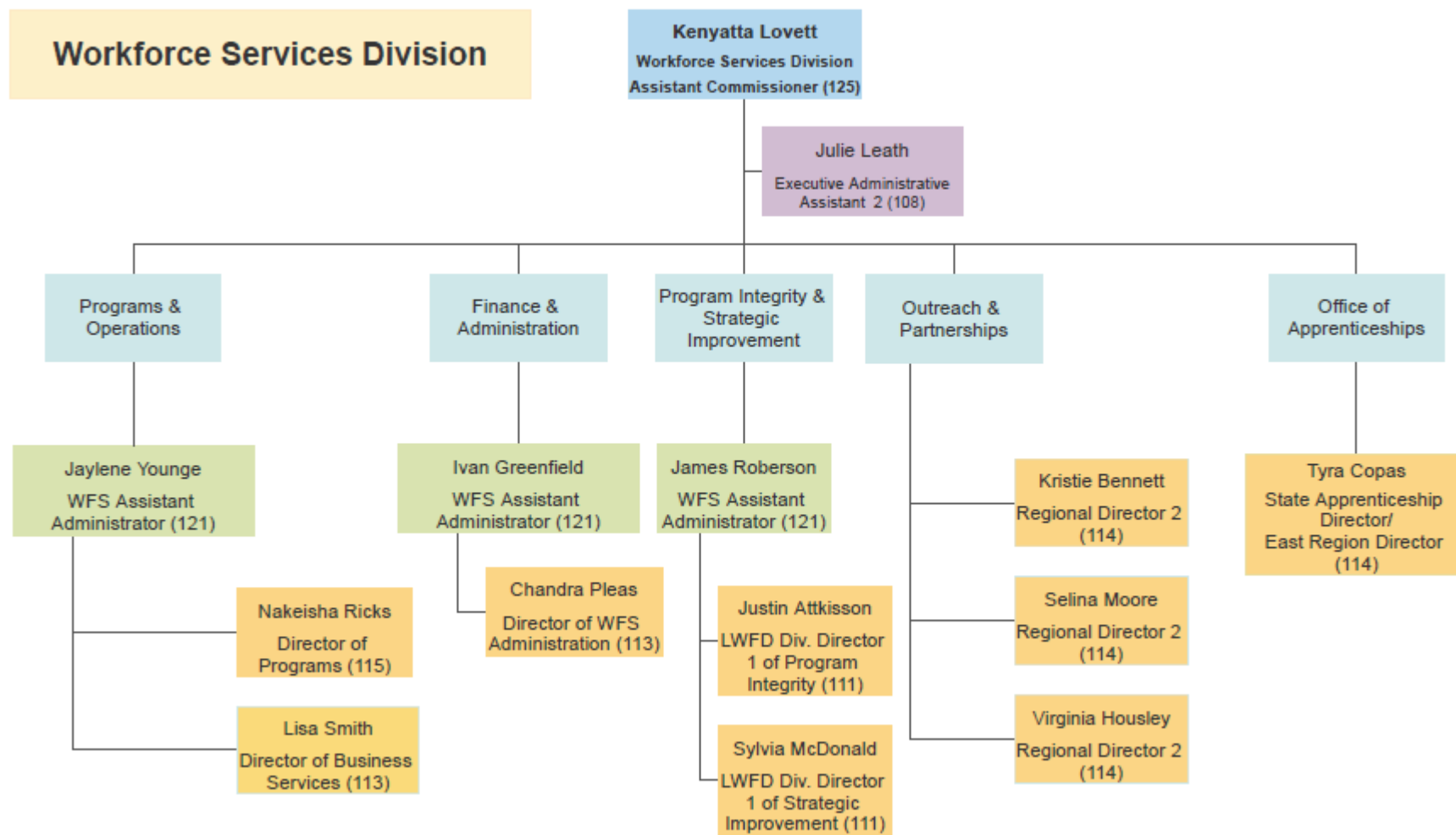
# Sector Strategies

- \* Healthcare
- \* Information Technology
- \* Construction
- \* Advanced Manufacturing
- \* Transportation and Logistics
- \* Educational Services

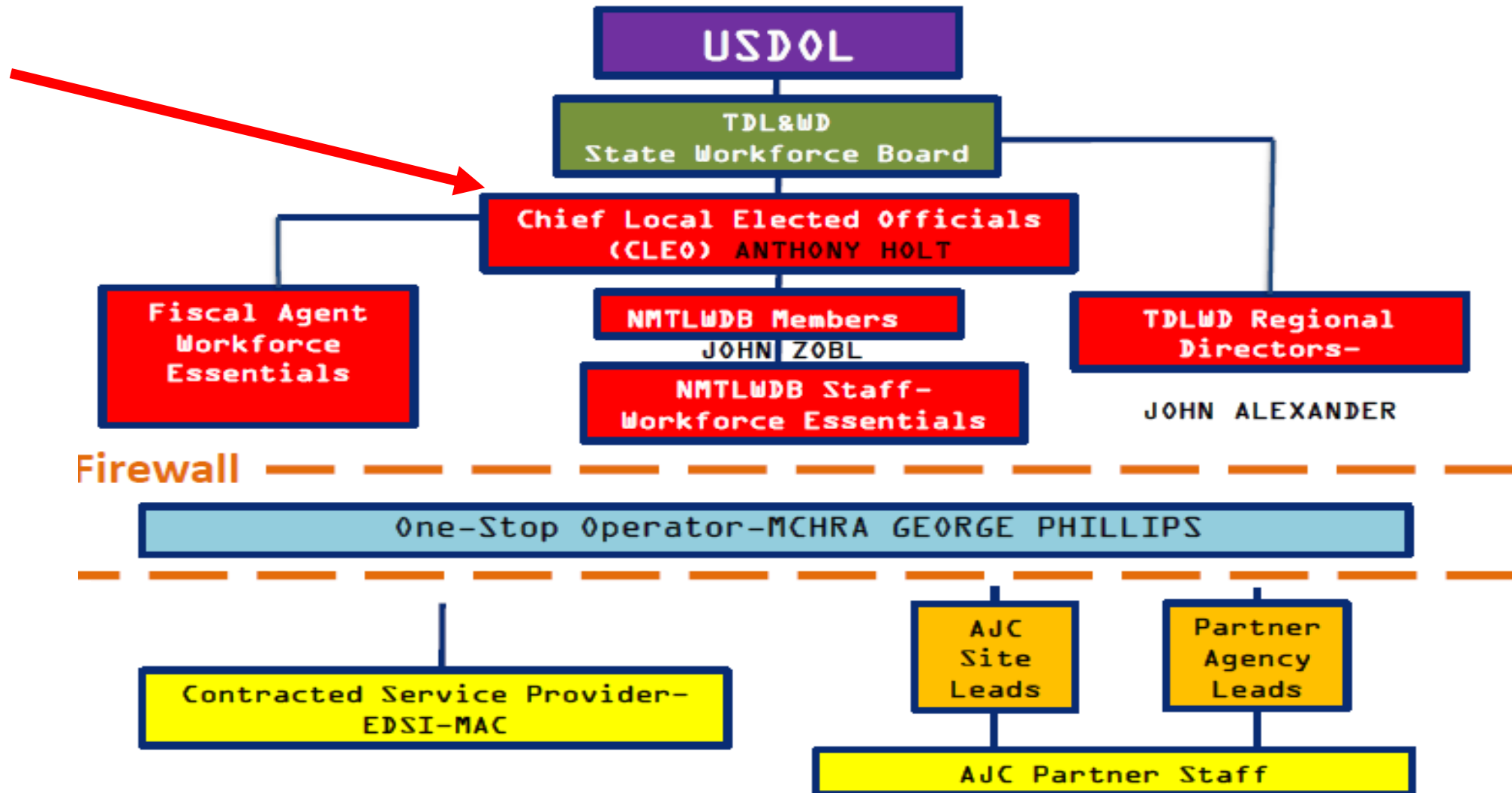
# Workforce System Structure



# Tennessee Department of Labor & Workforce Development



# Workforce System Structure



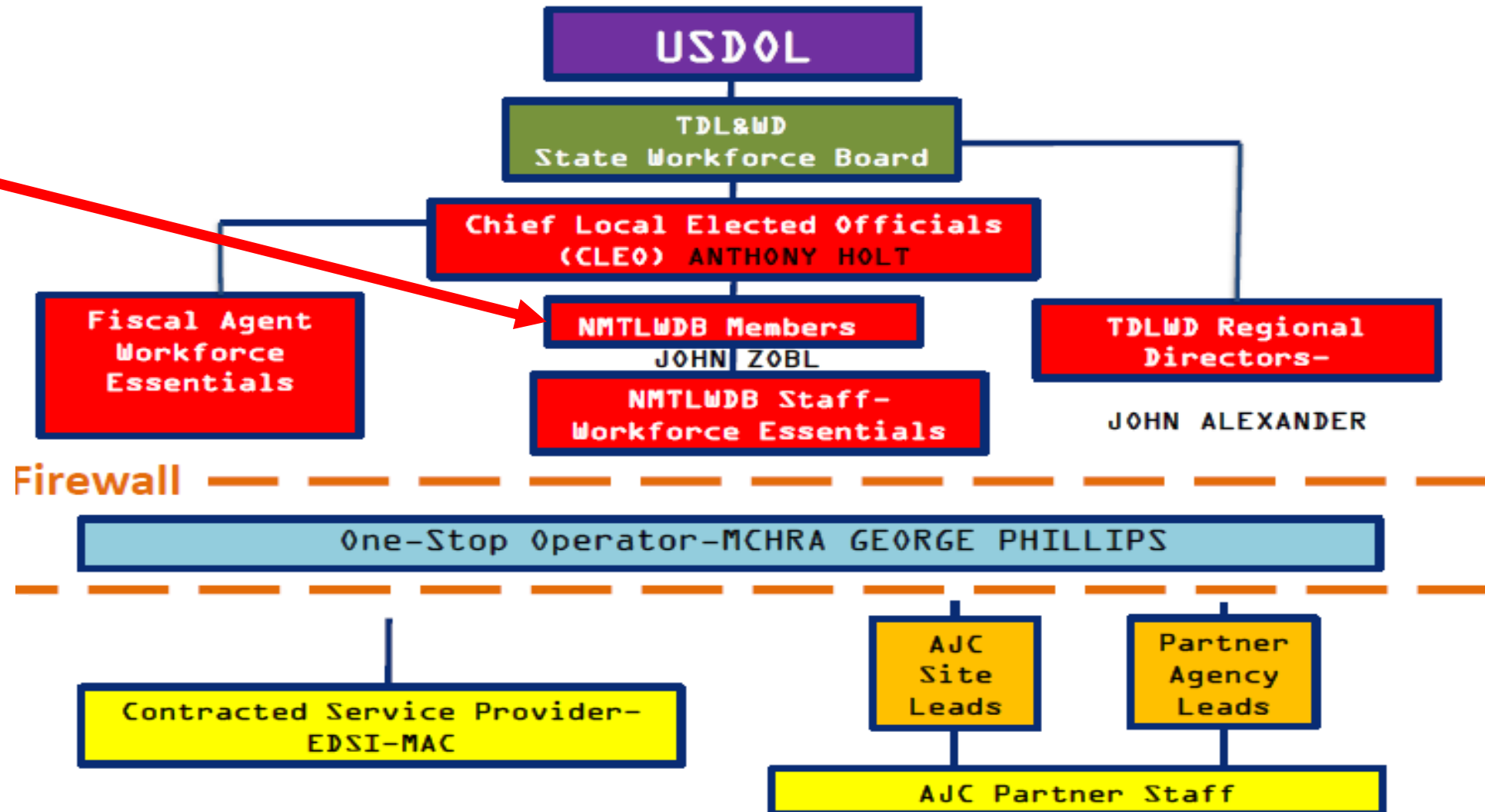


# LOCAL ELECTED OFFICIALS

<b>The Honorable Kerry McCarver</b> Cheatham County Mayor Cheatham County Courthouse 100 Public Square, Suite 105 Ashland City, TN 37015	<b>The Honorable John Cooper</b> Davidson County Mayor Davidson County Courthouse 1 Public Square, Suite 100 Nashville, TN 37201
<b>The Honorable Bob Rial</b> Dickson County Mayor Dickson County Courthouse PO Box 267; Courthouse Square Charlotte, TN 37036	<b>The Honorable James Bridges</b> Houston County Mayor Houston County Courthouse #101 4725 East Main Street Erin, TN 37061
<b>The Honorable Jessie Wallace</b> Humphreys County Mayor Humphreys County Courthouse Annex 102 Thompson Street Room 1 Rawlings Bldg. Waverly, TN 37185	<b>The Honorable Jim Durrett</b> Montgomery County Mayor PO Box 368 One Millennium Plaza Clarksville, TN 37041
<b>The Honorable Billy Vogle</b> Robertson County Mayor Robertson County Courthouse Main Street Room 108 Springfield, TN 37172	<b>The Honorable Bill Ketron</b> Rutherford County Mayor Rutherford County Courthouse 1 Public Square, Room 101 Murfreesboro, TN 37130
<b>The Honorable Robin Brandon</b> Stewart County Mayor Stewart County Courthouse PO Box 487 226 Lakeview Drive Dover, TN 37058	<b>The Honorable Anthony Holt</b> Sumner County Executive (Chief Elected Official) Sumner County Administrative Building 355 Belvedere Drive N Suite 102 Gallatin, TN 37066
<b>The Honorable Stephen Chambers</b> Trousdale County Mayor 328 Broadway, Room 10 Hartsville, TN 37074	<b>The Honorable Rogers Anderson</b> Williamson County Mayor Williamson County Courthouse 1320 W Main, Suite 125 Franklin, TN 37064
<b>The Honorable Randall Hutto</b> Wilson County Mayor Wilson County Courthouse 228 E Main Street, Room 104 Lebanon, TN 37087	



# Workforce System Structure



# Northern Middle Workforce Board

## **Business Representation:**

Jennifer Hobbs - Nashville Fabricators  
Howard Bradley - F & M Bank  
Keith Carnahan - Meriwether Lewis Electric Cooperative  
James Harper - Hensel Phelps  
Mark Peed - Peed Family Trucking  
Tony Adams - Benefits Inc.  
Brian Sims - Embassy Suites  
Kristi Spurgeon - Chemours  
Charles Story - ECS Group, Inc.  
Seth Thurman - Wilson Bank and Trust  
Christopher West - National Healthcare Corp  
Dan Caldwell - Nissan  
John Zobl - A to Z Consulting (**Board Chair**)  
Dan Ryan - Ryan Research & Consulting

## **Labor Representation:**

Richie Brandon - Local Carpenters Union 223  
Jon Hunter - Fort Campbell / Veterans  
George "Bo" Callis - Plumbers and Pipefitters Local 572  
David Rutledge - Central Labor Council of Nashville/Middle TN  
Dan Caldwell - United Way

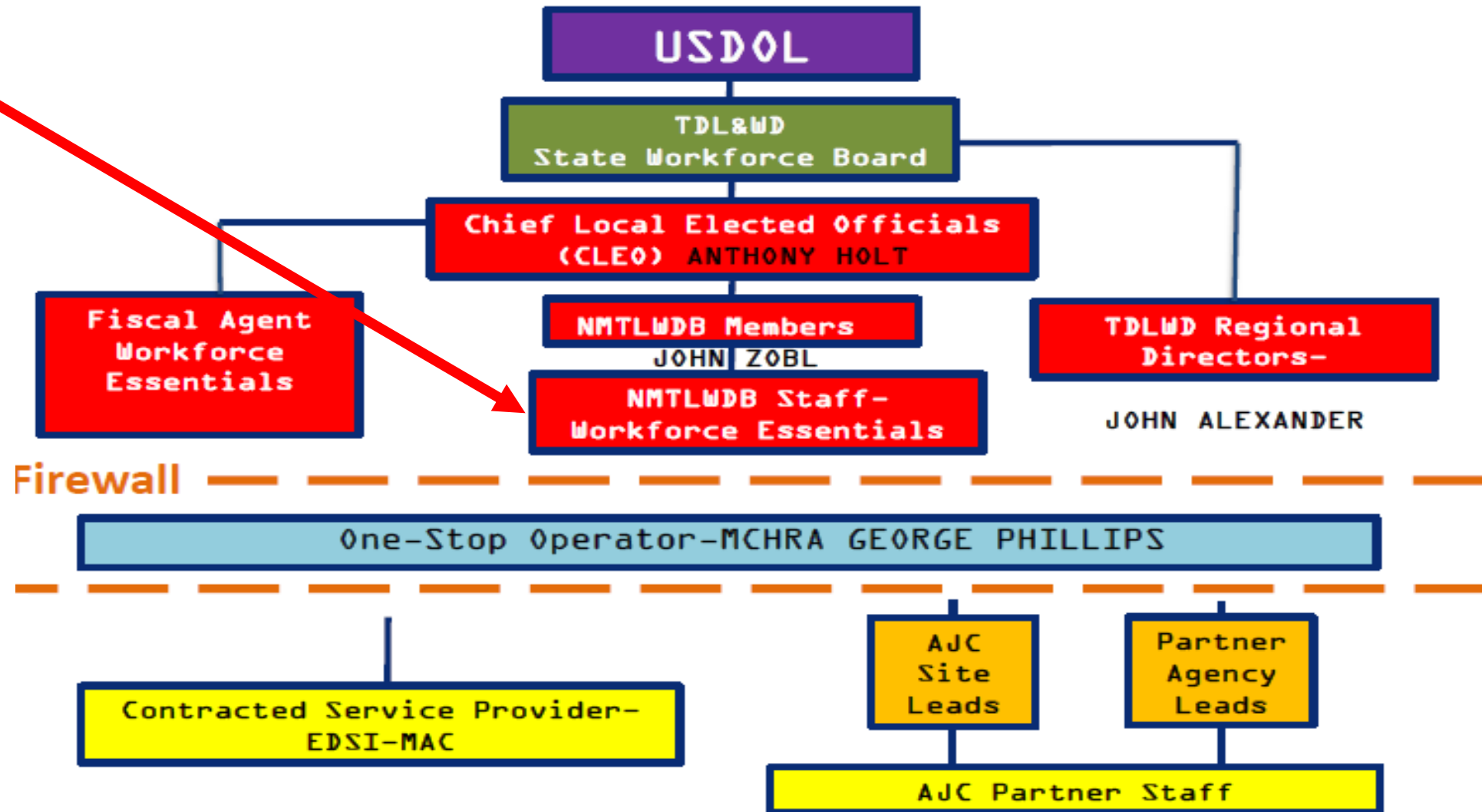
## **Education Representation:**

Carol Puryear - Tennessee Board of Regents  
Lynn Siefert

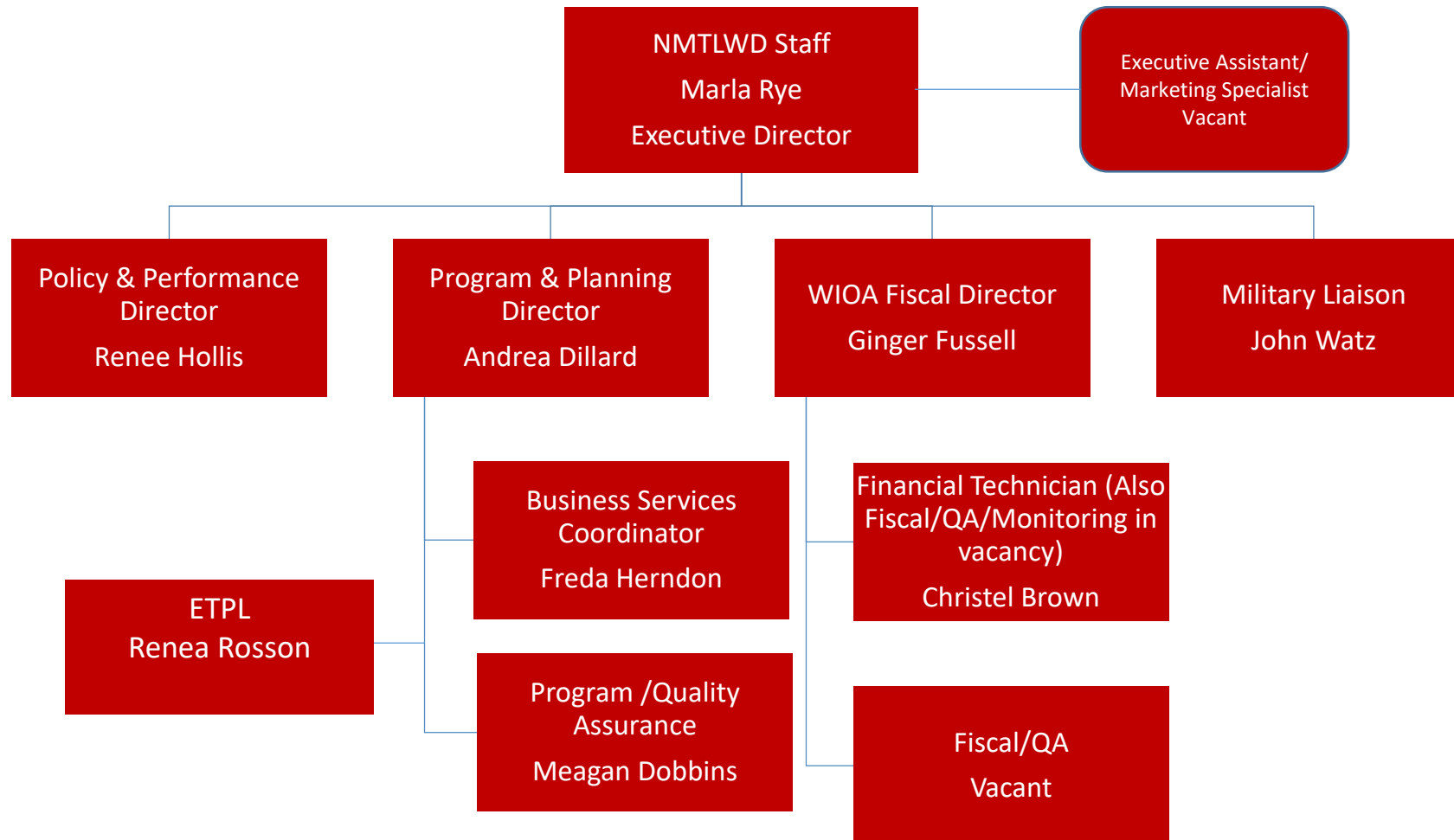
## **Government Representation:**

GC Hixon - Joint Economic & Community Board of Wilson County  
John Alexander - Tennessee Department of Labor and Workforce Development  
Tylesha McCray - Tennessee Department of Human Services

# Workforce System Structure



# Northern Middle Staff to the LWDB



## Northern Middle Tennessee Local Workforce Development Board Staff

<u>Executive Director:</u> <b>Marla Rye</b> Phone: 931-905-3500 <a href="mailto:mrye@workforceessentials.com">mrye@workforceessentials.com</a>	<u>Military Liaison:</u> <b>John Watz</b> Phone: 931-905-3502 <a href="mailto:jwatz@workforceessentials.com">jwatz@workforceessentials.com</a>
<u>Director of Planning and Program Development:</u> <b>Andrea Dillard</b> Phone: 931-905-3501 <a href="mailto:adillard@workforceessentials.com">adillard@workforceessentials.com</a>	<u>Business Service Coordinator:</u> <b>Freda Herndon</b> Phone: 931-905-3584 <a href="mailto:fhernon@workforceessentials.com">fhernon@workforceessentials.com</a>
<u>Director of Policy and Performance Management:</u> <b>Renee Hollis</b> Phone: 931-905-3506 <a href="mailto:rhollis@workforceessentials.com">rhollis@workforceessentials.com</a>	<u>Program Quality Assurance Specialist:</u> <b>Meagan Dobbins</b> Phone: 931-905-3532 <a href="mailto:mdobbins@workforceessentials.com">mdobbins@workforceessentials.com</a>
<u>WIOA Fiscal Director:</u> <b>Ginger Fussell</b> Phone: 931-905-3559 <a href="mailto:gfussell@workforceessentials.com">gfussell@workforceessentials.com</a>	<u>Executive Assistant:</u> <b>Vacant</b> Phone: 931-905-3504
<u>Renea Rosson</u> <a href="mailto:mrosson@workforceessentials.com">mrosson@workforceessentials.com</a>	<b>Christel Brown</b> <a href="mailto:cbrown@workforceessentials.com">cbrown@workforceessentials.com</a>





# Strategic Priorities

## Northern Middle Workforce Board Strategic Priorities

- ▶ Connect people with career opportunities better than they could on their own
- ▶ Manage board funds to support lifelong career pathways
- ▶ Train workforce to fill employer requirements
- ▶ Improve the efficiency and effectiveness of our training processes

# AJC Locations

<b>Cheatham County</b> (Affiliate) 384 South Main Street Ashland City, TN	<b>Davidson County</b> (Comprehensive) 665 Mainstream Drive Nashville, TN	<b>Dickson County</b> (Affiliate) 250 Beasley Drive Dickson, TN
<b>Houston County</b> (Affiliate) 155 Front Street Erin, TN	<b>Humphreys County</b> (Affiliate) 711 Holly Lane Waverly, TN	<b>Montgomery County</b> (Comprehensive) 523 Madison Street Clarksville, TN
<b>Fort Campbell</b> (Specialized) 101 Ringgold Rd Clarksville, TN	<b>Robertson County</b> (Affiliate) 299 10th Ave. East Springfield, TN	<b>Rutherford County</b> (Comprehensive) 1313 Old Fort Parkway Murfreesboro, TN
<b>Stewart County</b> (Affiliate) 1356 Donelson Parkway Dover, TN	<b>Sumner County</b> (Comprehensive) 1598 Greenlea Blvd. Gallatin, TN	<b>Trousdale County</b> (Specialized) 294 E. McMurry Blvd. Hartsville, TN
<b>Williamson County</b> (Affiliate) 118 Seaboard Lane Franklin, TN	<b>Wilson County</b> (Affiliate) 415 Tennessee Blvd. Lebanon, TN	

# Fort Campbell

## Serving Transitioning Soldiers & Spouses



# Middle Tennessee Region

## AREA

- Northern Middle
- Southern Middle
- Upper Cumberland

## Executive Director

Marla Rye

Barbara Kiser

Becky Hull

## Regional Director

John Alexander

Selina Moore

Sean Monday

- 40 Counties
- Regional planning
- Leveraging resources & relationships



# Current Projects:

- GIVE Grant
- Project Return
- Youth: Work Based Learning
- Youth: Career Exploration
- Rural Development-At Risk County
- CARES Grants
- Incumbent Worker Training & Apprenticeships
- Economic Development Partnerships-Industry Recruitment

# QUESTIONS

- Next session begins at 2:00 p.m.